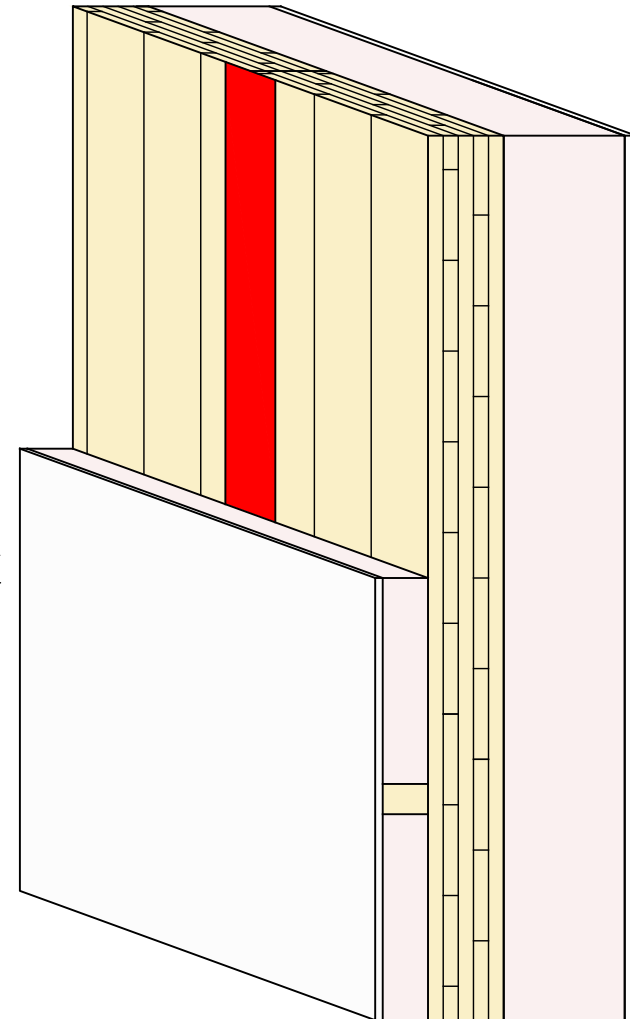
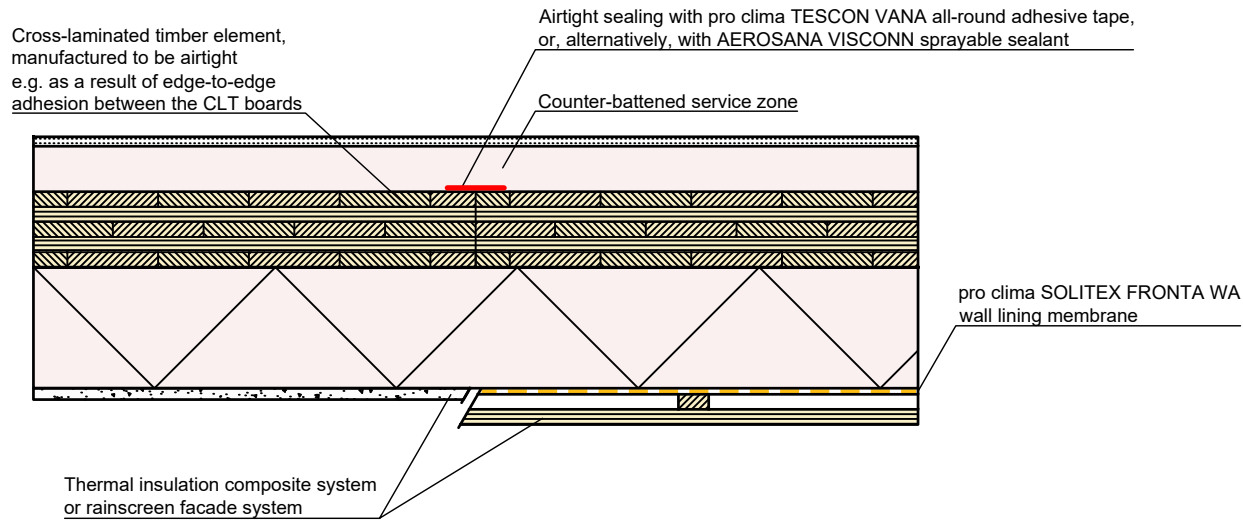


Solid timber construction | Element joint | Exterior taping with TESCON VANA

Airtight sealing on the outside with pro clima TESCON VANA. The cross-laminated timber elements must be manufactured to be airtight.

pro clima ... and the insulation is perfect



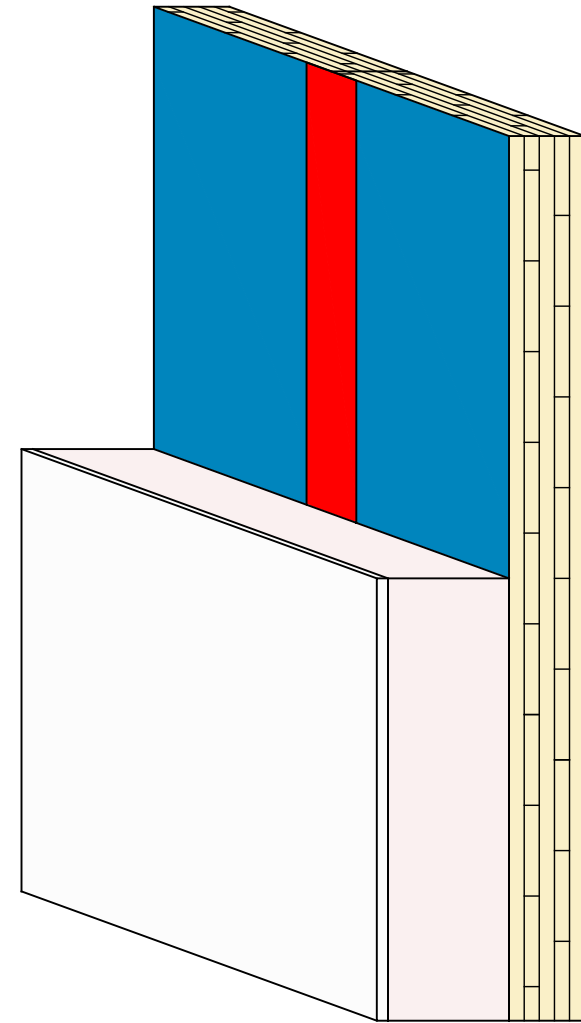
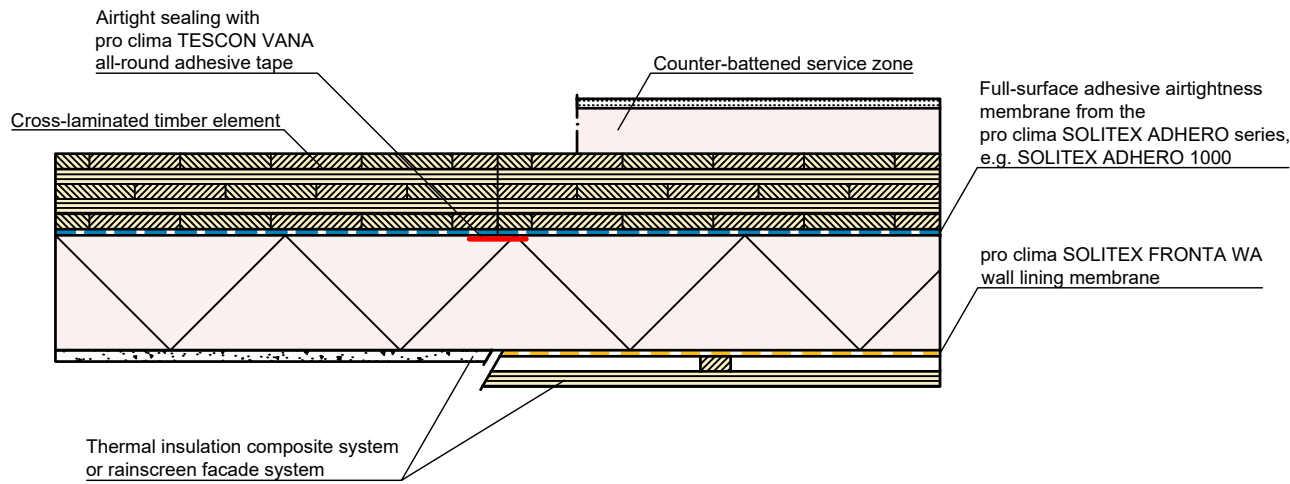


Solid timber construction | Element joint | Interior taping with TESCON VANA

Airtight sealing on the inside with pro clima TESCON VANA. The cross-laminated timber elements must be manufactured to be airtight.

pro clima ... and the insulation is perfect



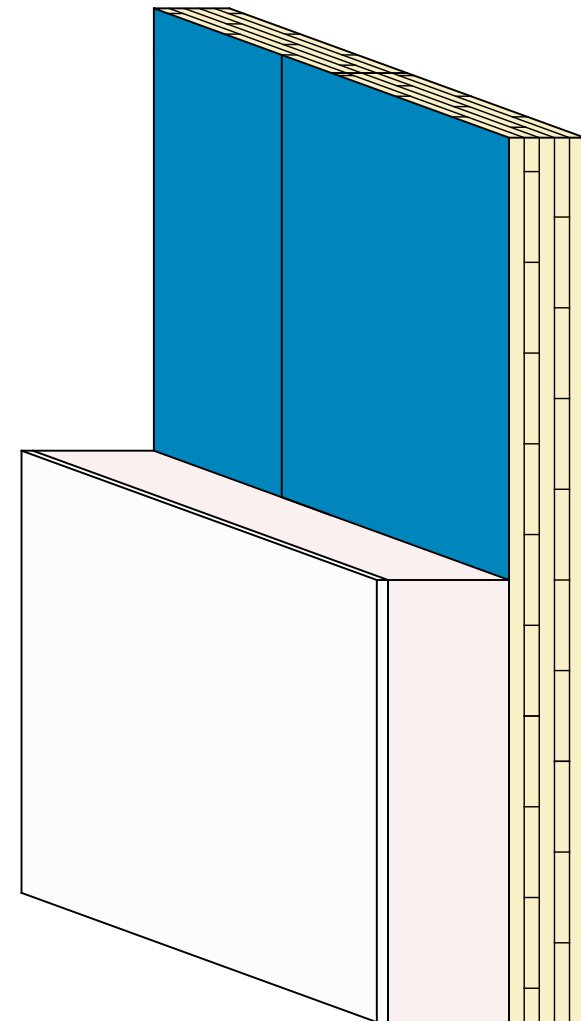
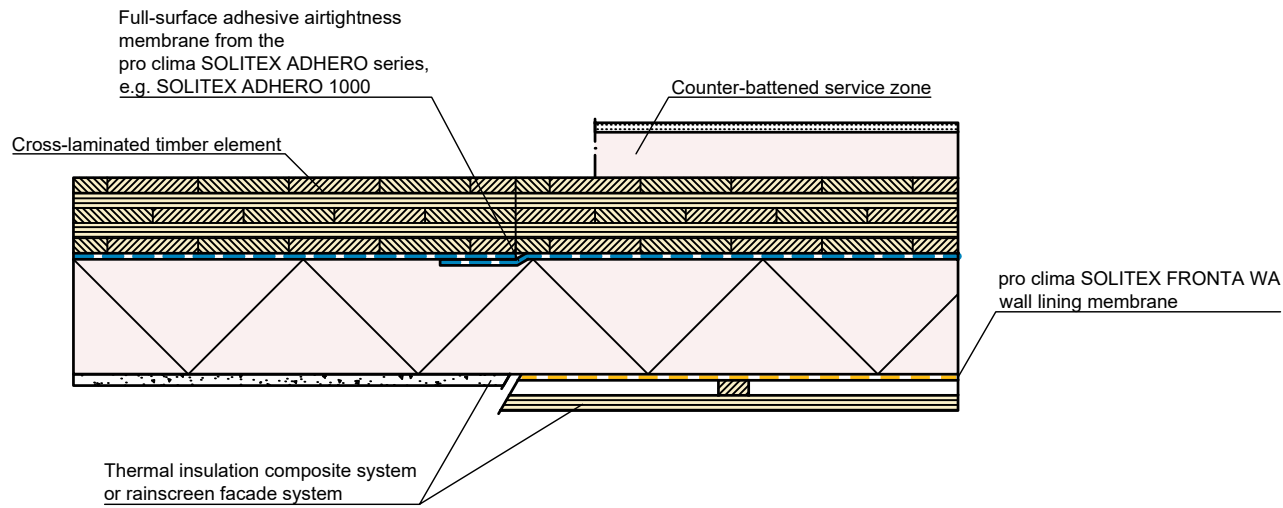


Solid timber construction | Element joint | Airtightness with SOLITEX ADHERO | Var. 1

Variant 1: Airtightness with pro clima SOLITEX ADHERO – for example: in the case of ex works installation on cross-laminated timber elements.

pro clima ... and the insulation is perfect



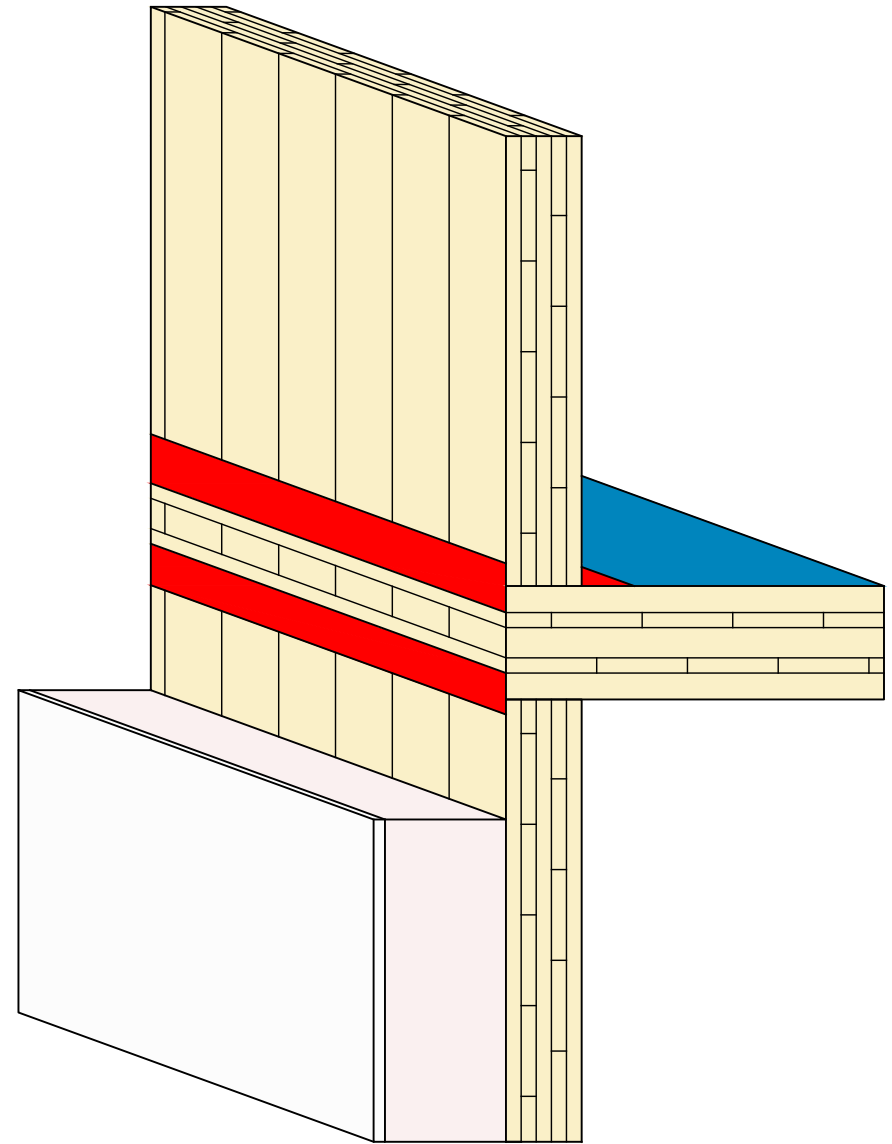
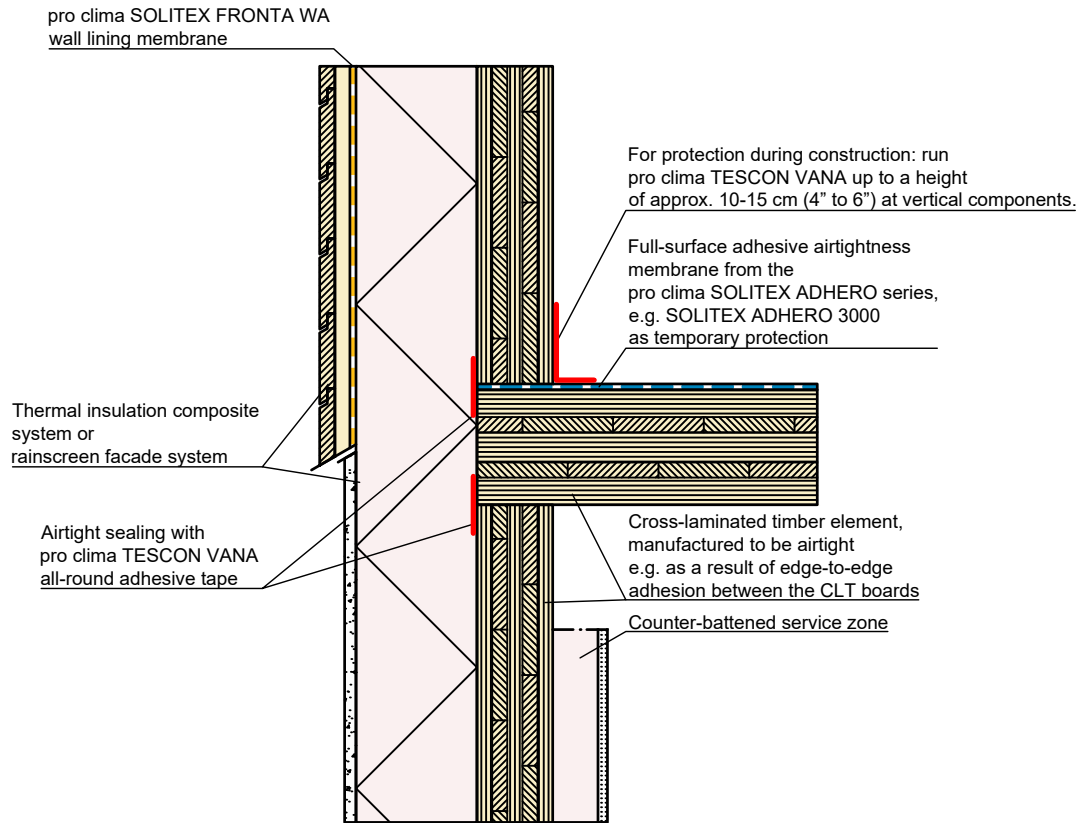


Solid timber construction | Element joint | Airtightness with SOLITEX ADHERO | Var. 2

Variant 2: Airtightness with pro clima SOLITEX ADHERO – for example: in the case of installation during the construction phase.

pro clima ... and the insulation is perfect



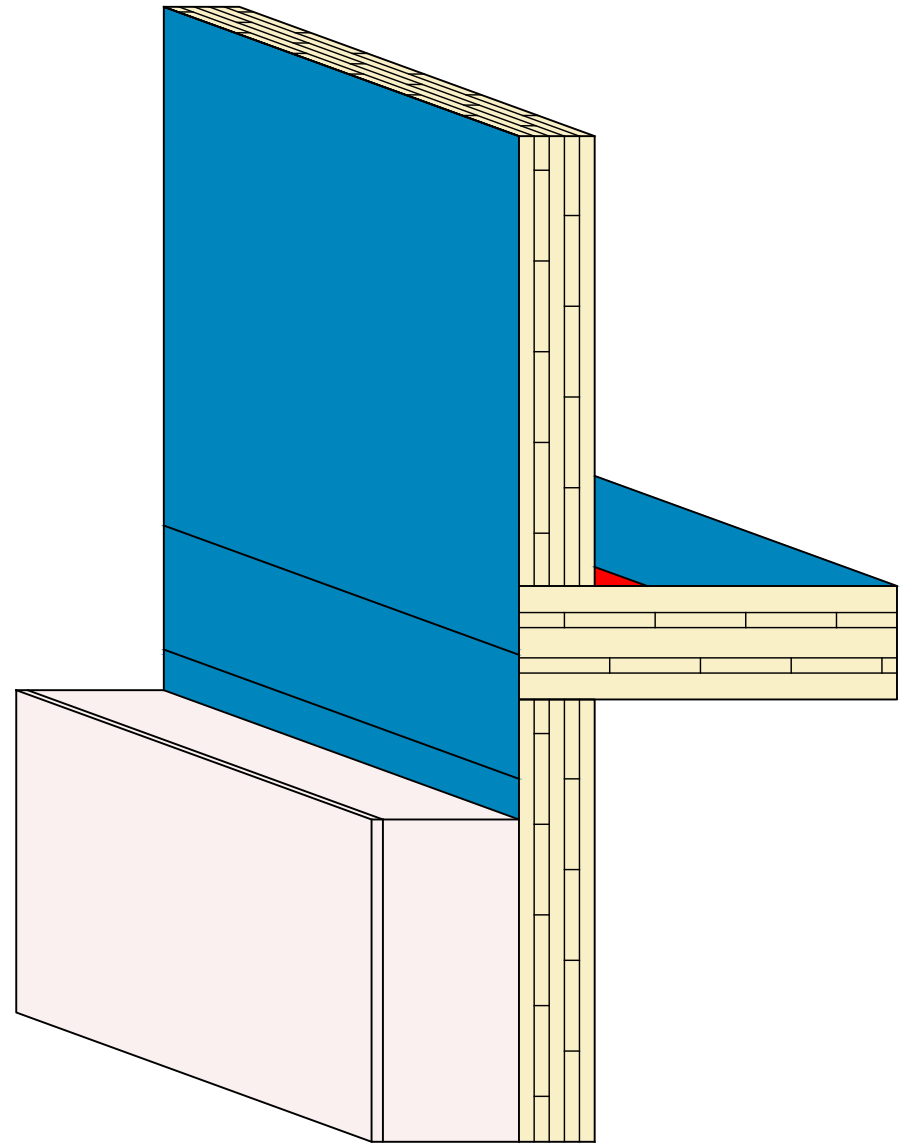
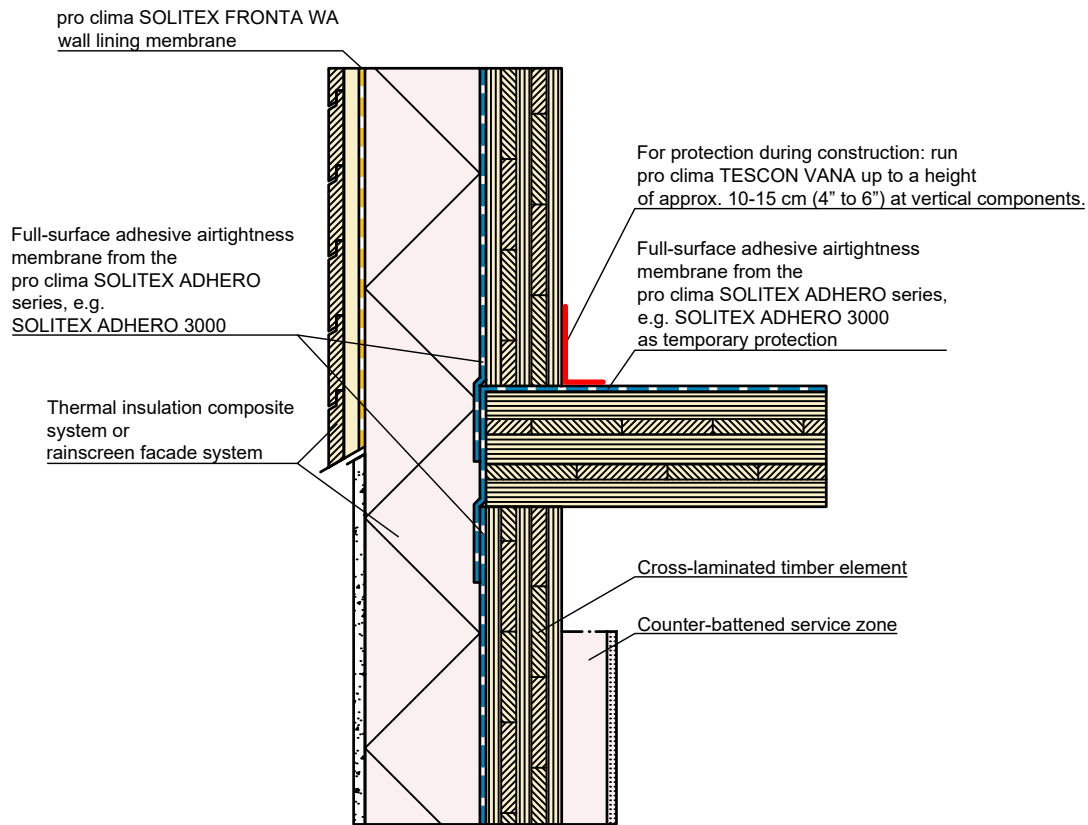


Solid timber construction | Floor joint | Exterior taping with TESCON VANA

Airtight sealing on the outside with pro clima TESCON VANA. The cross-laminated timber elements must be manufactured to be airtight.

pro clima ... and the insulation is perfect





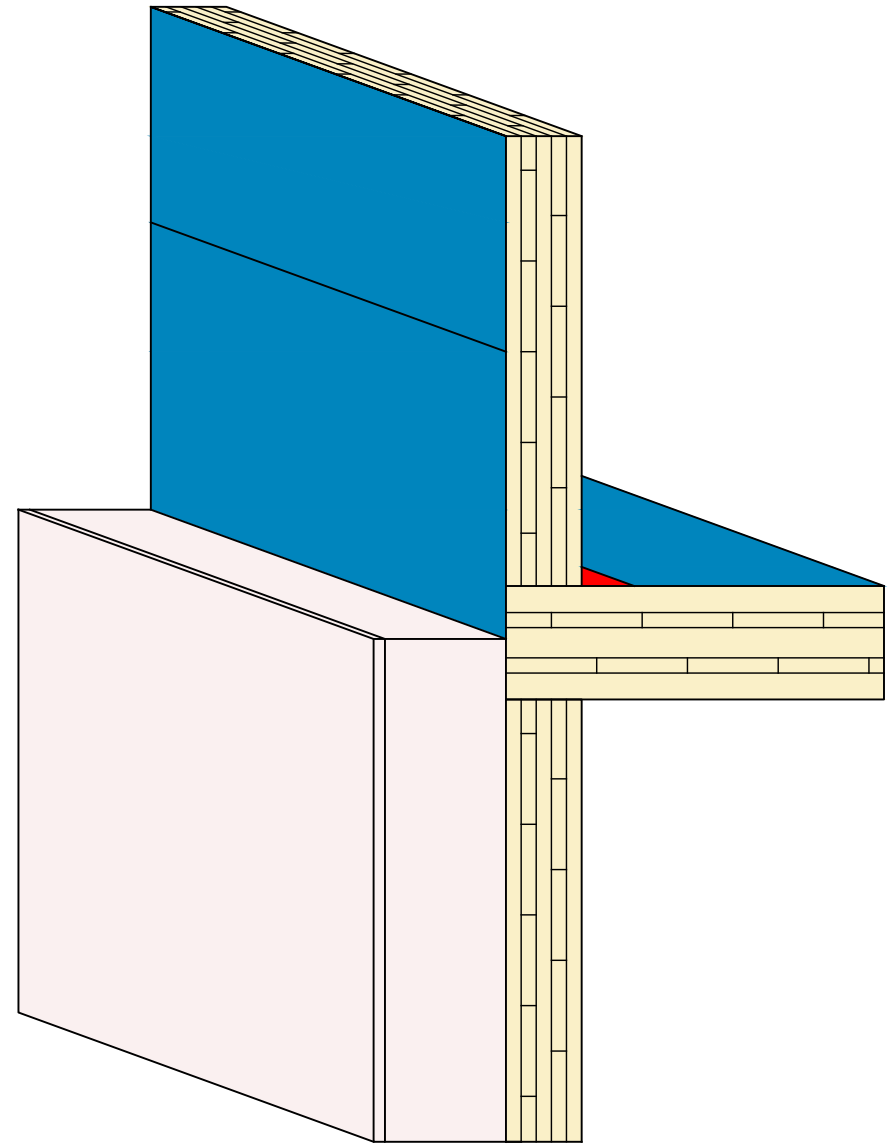
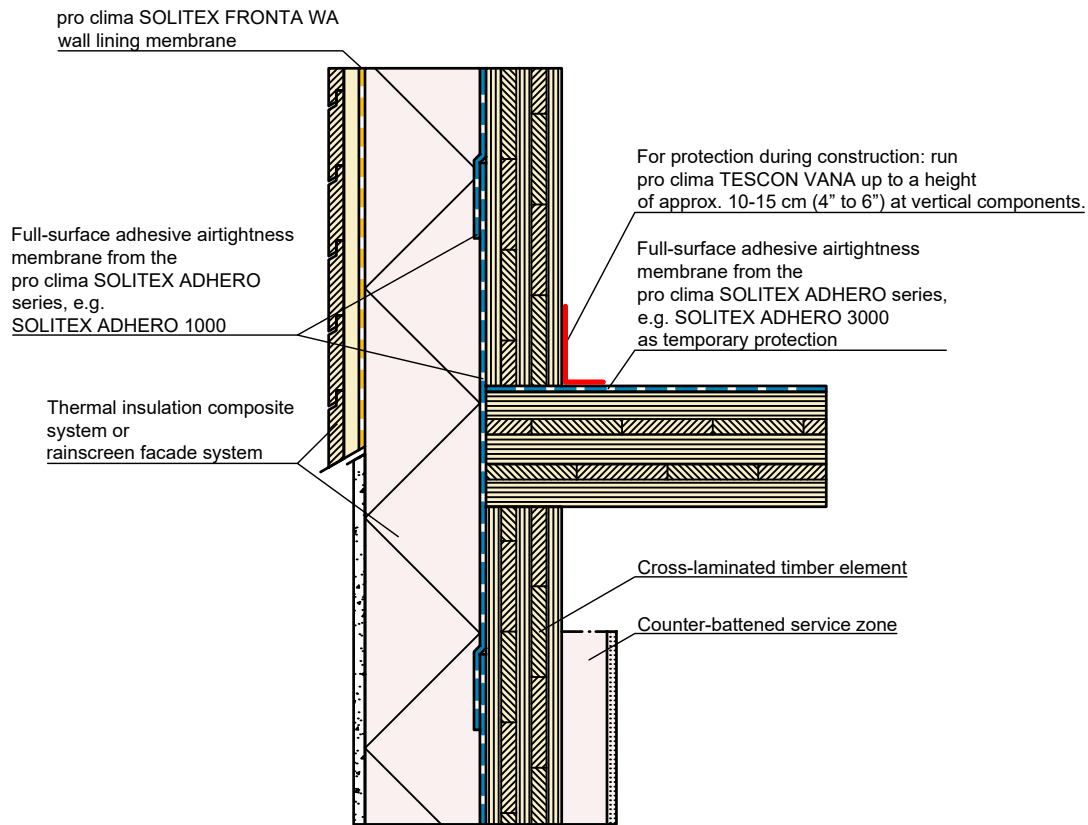
Solid timber construction | Floor joint | Airtightness with SOLITEX ADHERO | Var. 1

Variant 1: Airtightness with pro clima SOLITEX ADHERO. Membrane extends over the end edge of the floor slab.

Typical structural situation to illustrate the airtightness and windtightness layers. When carrying out planning and performing installation on site, please observe the currently applicable technical regulations and the relevant pro clima recommendations for applications and installation. (German version: 09/21; international version 03/23).

pro clima ... and the insulation is perfect





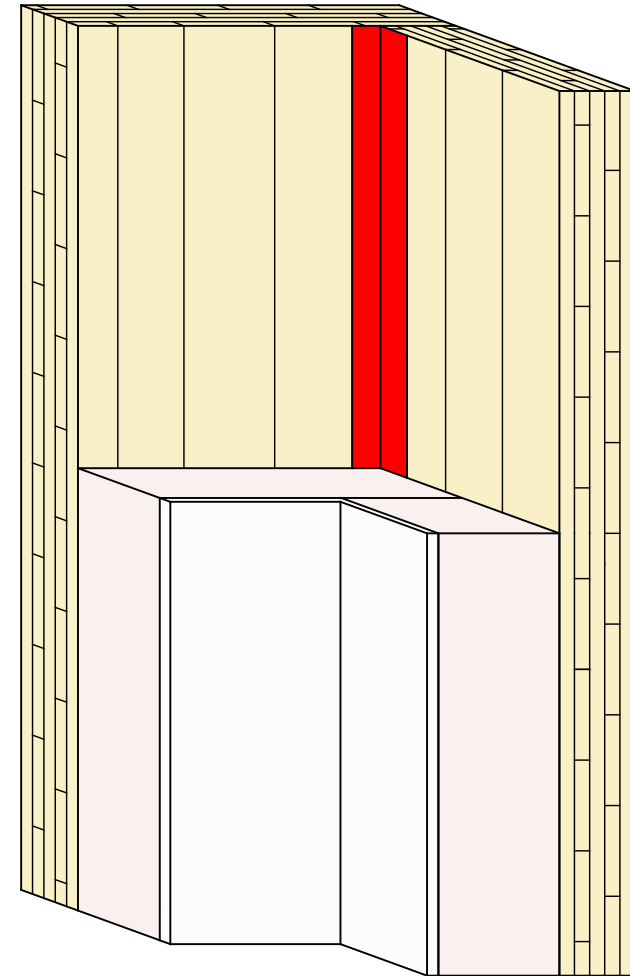
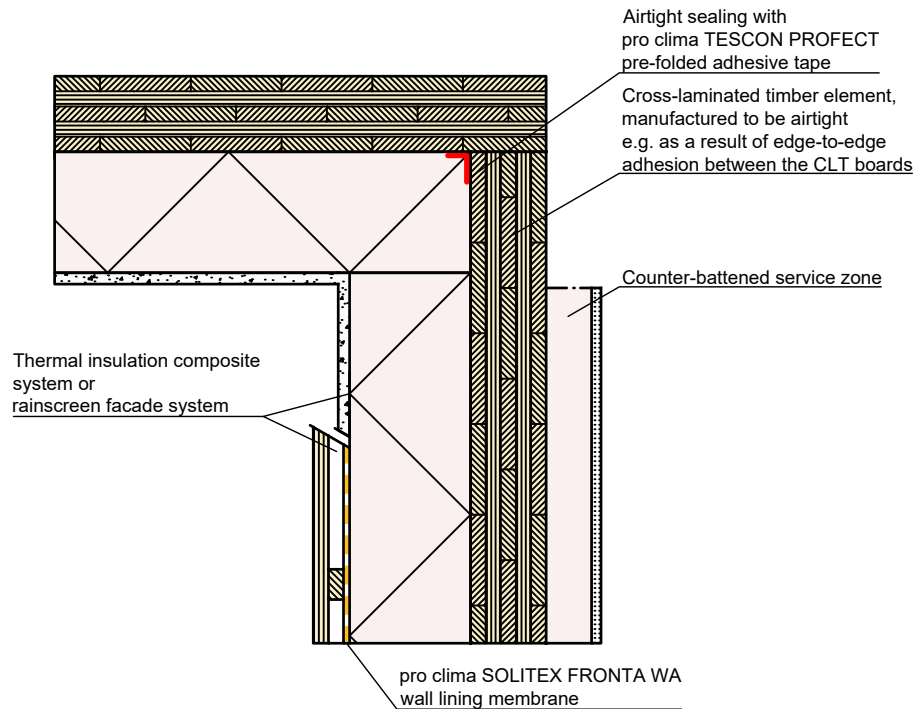
Solid timber construction | Floor joint | Airtightness with SOLITEX ADHERO | Var. 2

Variant 2: Membrane ends flush with outside layer, without continuation of the horizontal membrane through to the outside.

Typical structural situation to illustrate the airtightness and windtightness layers. When carrying out planning and performing installation on site, please observe the currently applicable technical regulations and the relevant pro clima recommendations for applications and installation. (German version: 09/21; international version 03/23).

pro clima ... and the insulation is perfect





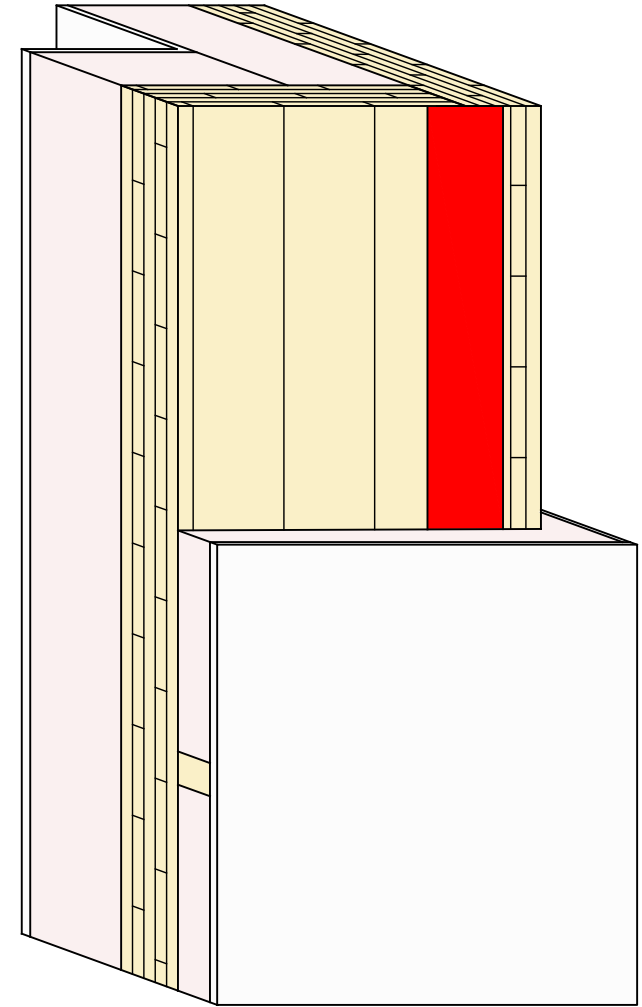
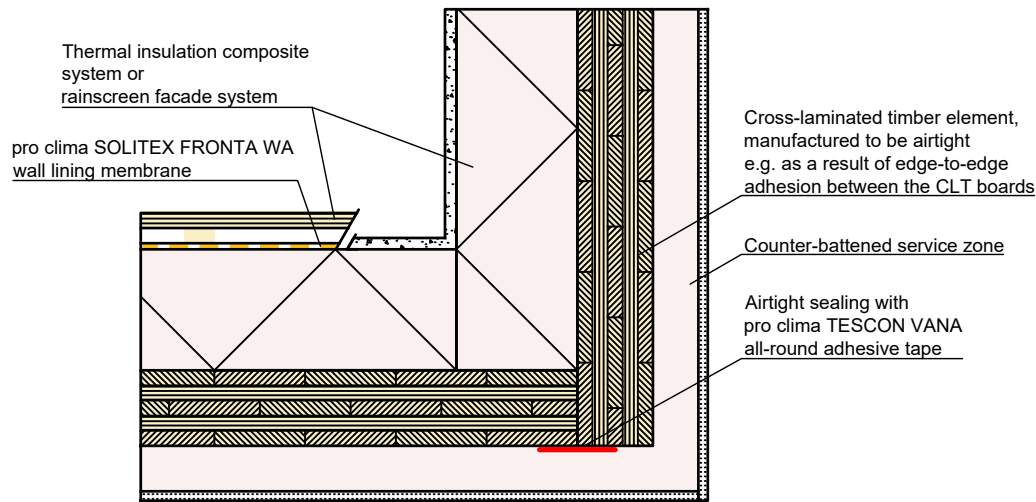
Solid timber construction | Interior corner | Exterior taping with TESCON PROTECT

Airtight sealing on the outside with pro clima TESCON PROTECT. The cross-laminated timber elements must be manufactured to be airtight.

Typical structural situation to illustrate the airtightness and windtightness layers. When carrying out planning and performing installation on site, please observe the currently applicable technical regulations and the relevant pro clima recommendations for applications and installation. (German version: 09/21; international version 03/23).

pro clima ... and the insulation is perfect



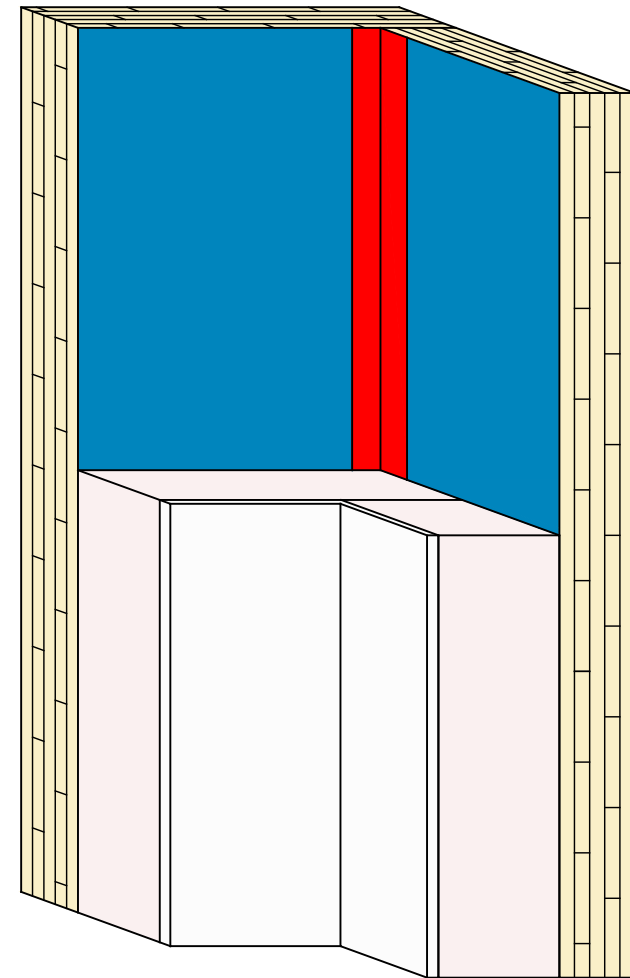
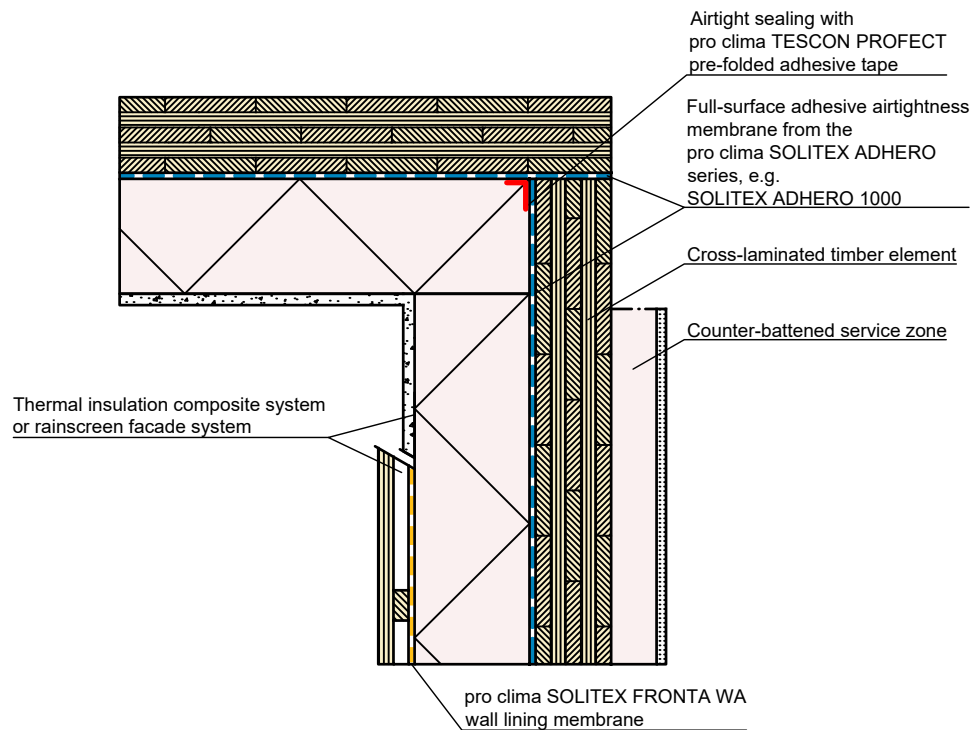


Solid timber construction | Interior corner | Interior taping with TESCON VANA

Airtight sealing on the inside with pro clima TESCON VANA. The cross-laminated timber elements must be manufactured to be airtight.

pro clima ... and the insulation is perfect



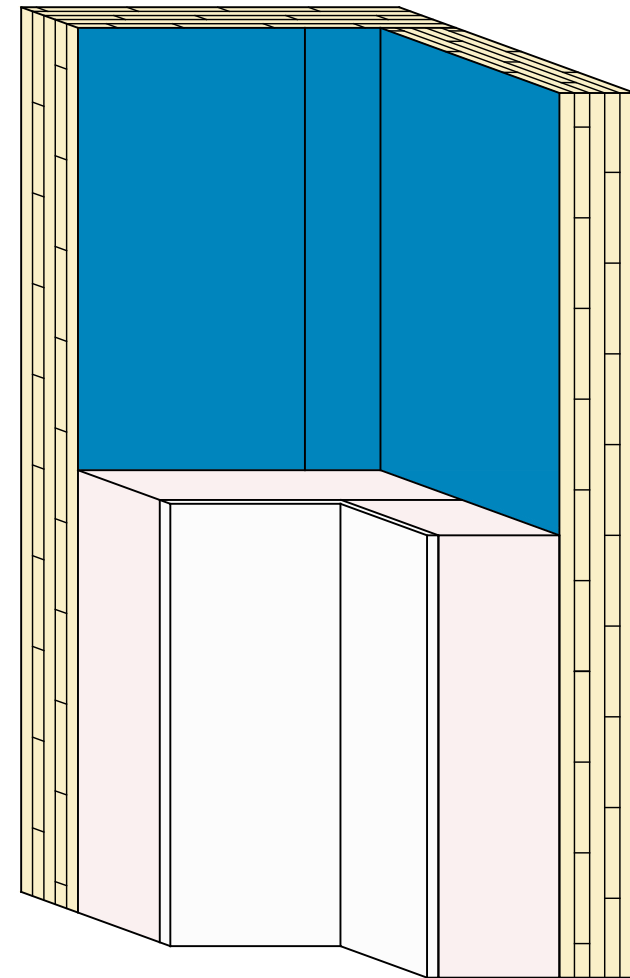
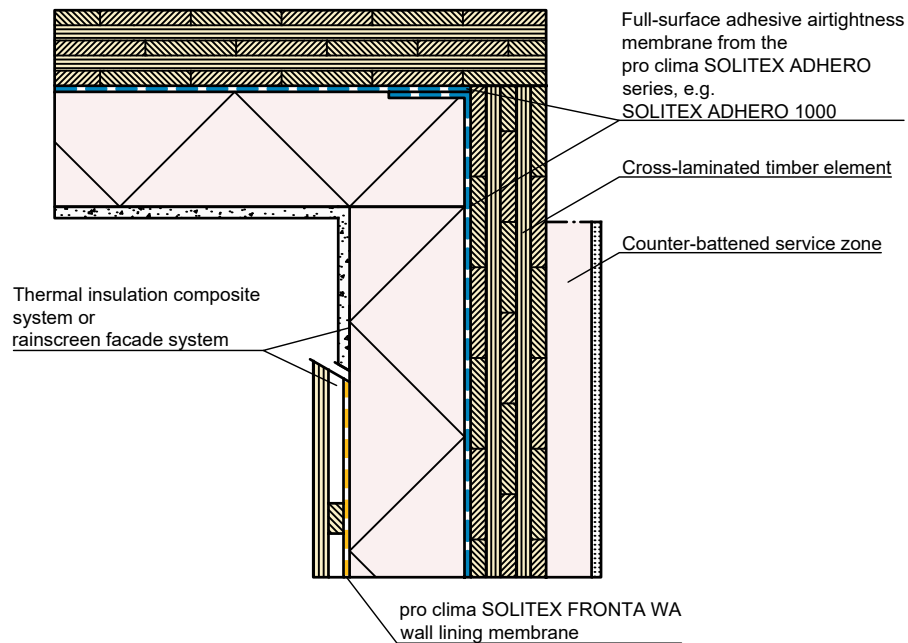


Solid timber construction | Interior corner | Airtightness with SOLITEX ADHERO | Var. 1

Variant 1: Airtightness with pro clima SOLITEX ADHERO – for example: in the case of ex works installation on cross-laminated timber elements.

pro clima ... and the insulation is perfect





Solid timber construction | Interior corner | Airtightness with SOLITEX ADHERO | Var. 2

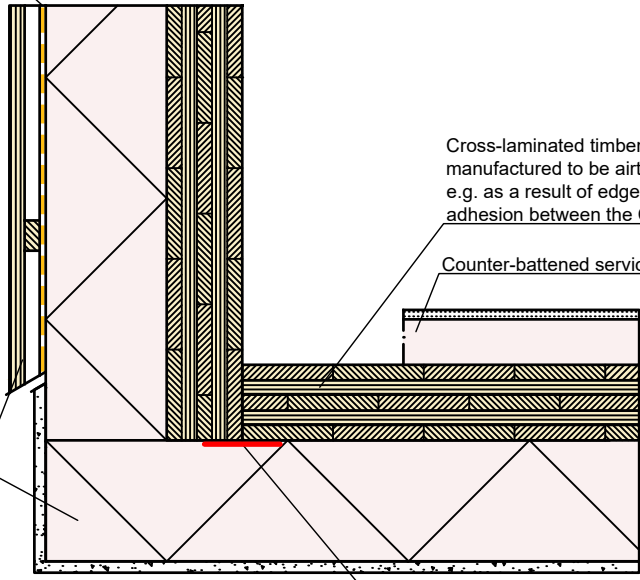
Variante 2: Airtightness with pro clima SOLITEX ADHERO – for example: in the case of installation during the construction phase.

pro clima ... and the insulation is perfect



pro clima SOLITEX FRONTA WA
wall lining membrane

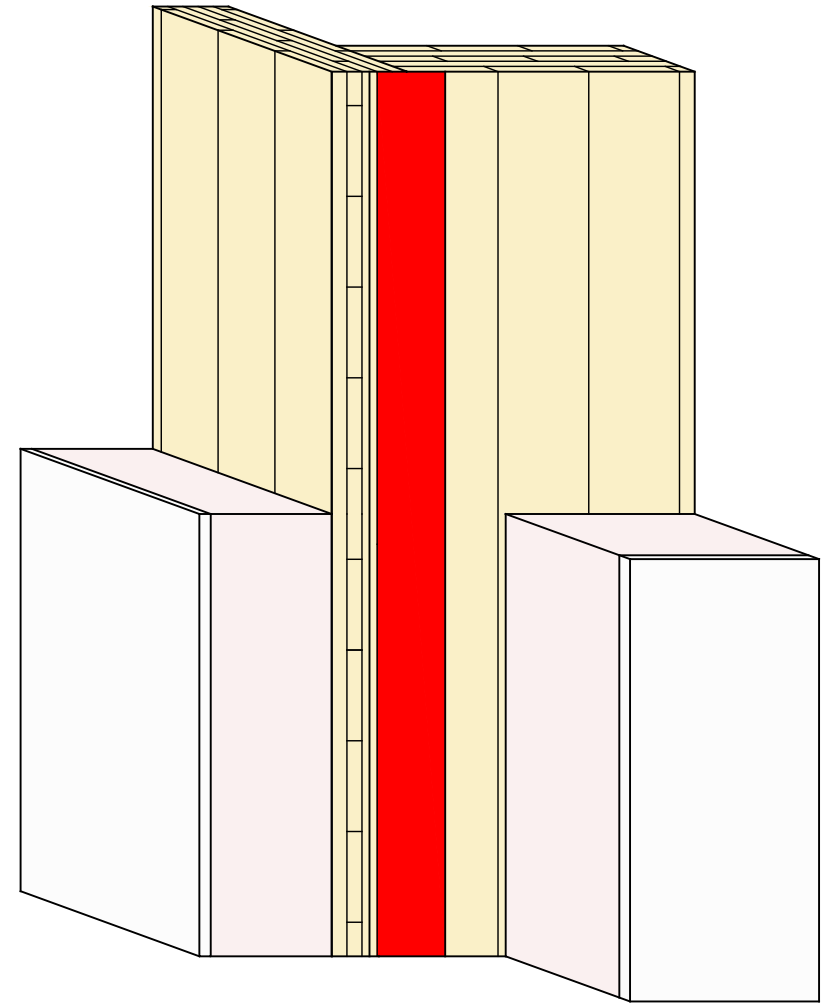
Thermal insulation composite
system or
rainscreen facade system



Cross-laminated timber element,
manufactured to be airtight
e.g. as a result of edge-to-edge
adhesion between the CLT boards

Counter-battened service zone

Airtight sealing with
pro clima TESCON VANA
all-round adhesive tape

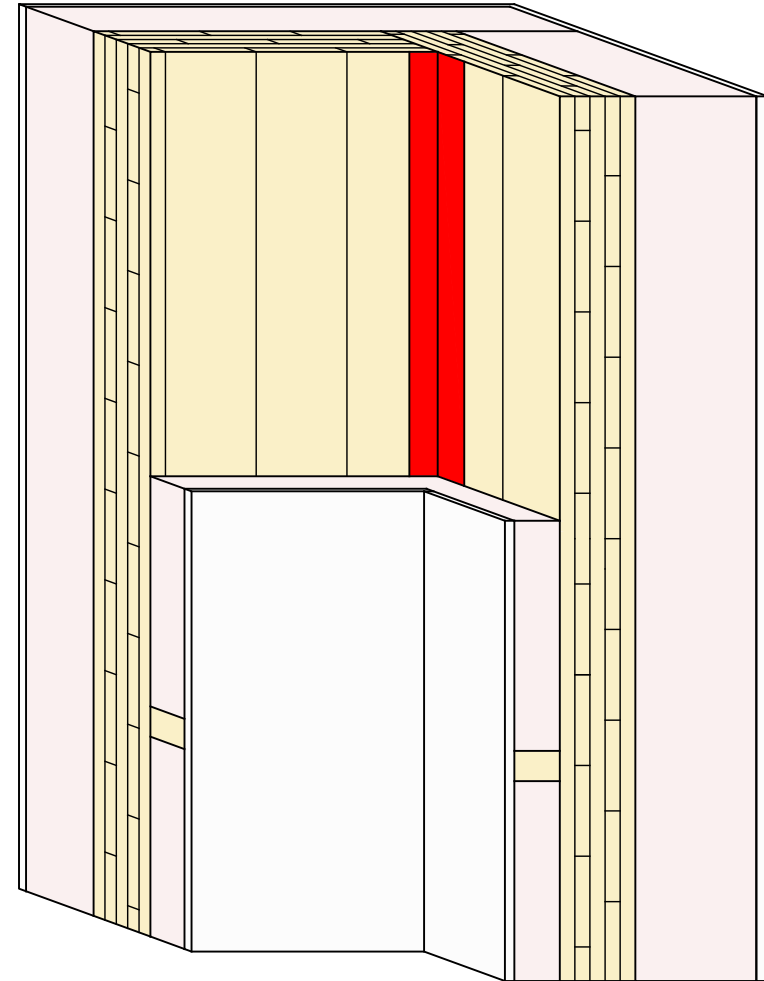
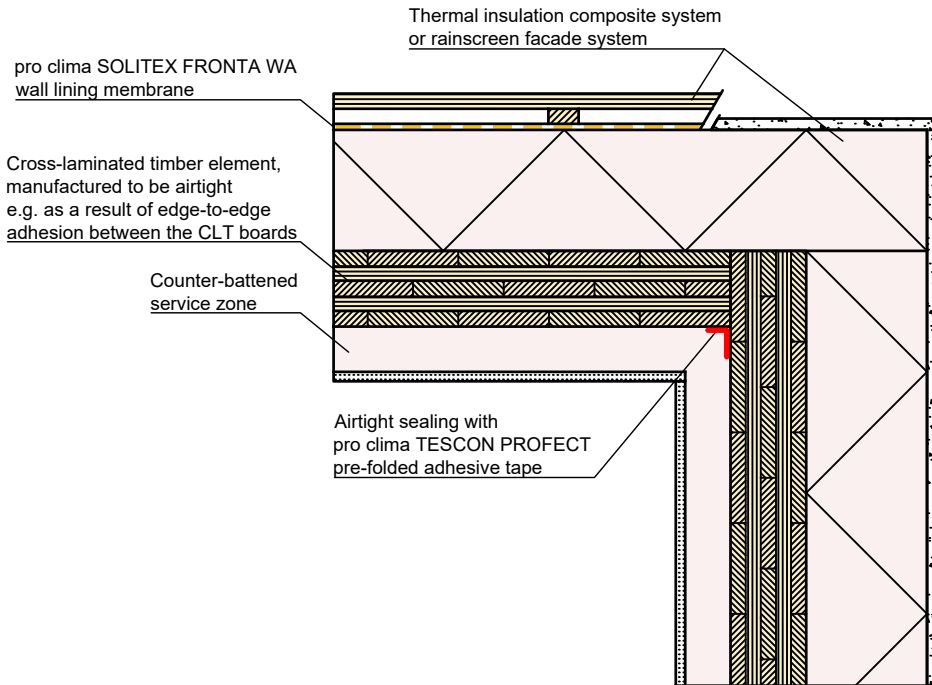


Solid timber construction | Exterior corner | Exterior taping with TESCON VANA

Airtight sealing on the outside with pro clima TESCON VANA. The cross-laminated timber elements must be manufactured to be airtight.

pro clima ... and the insulation is perfect





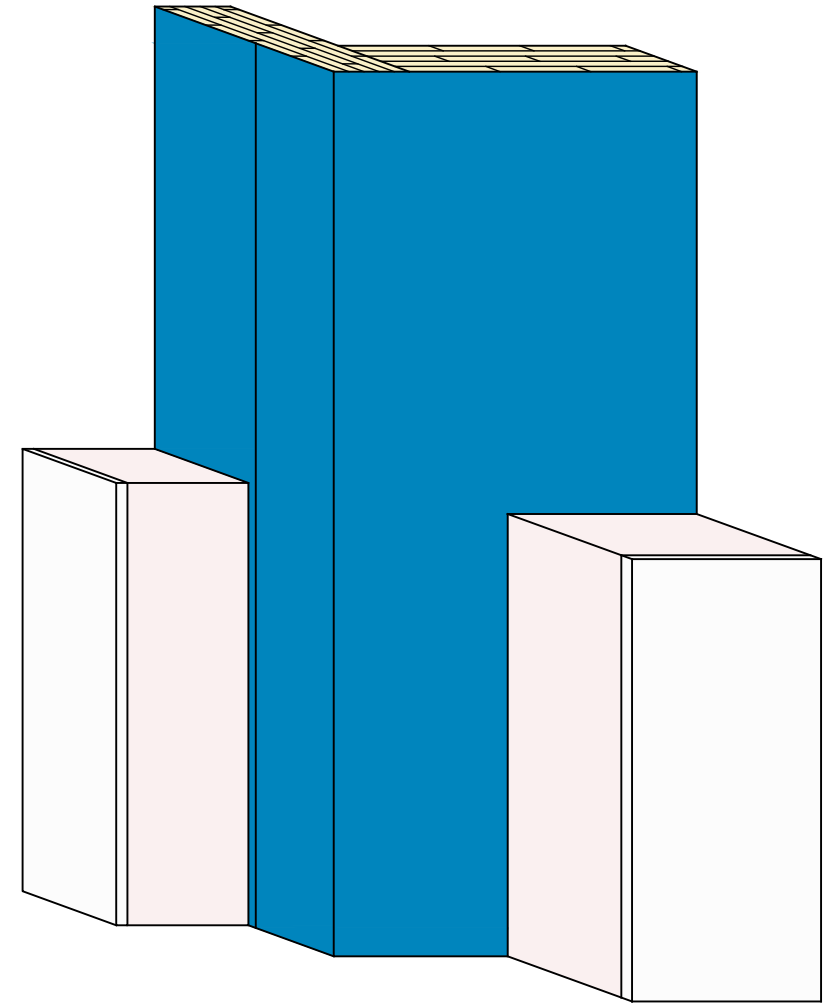
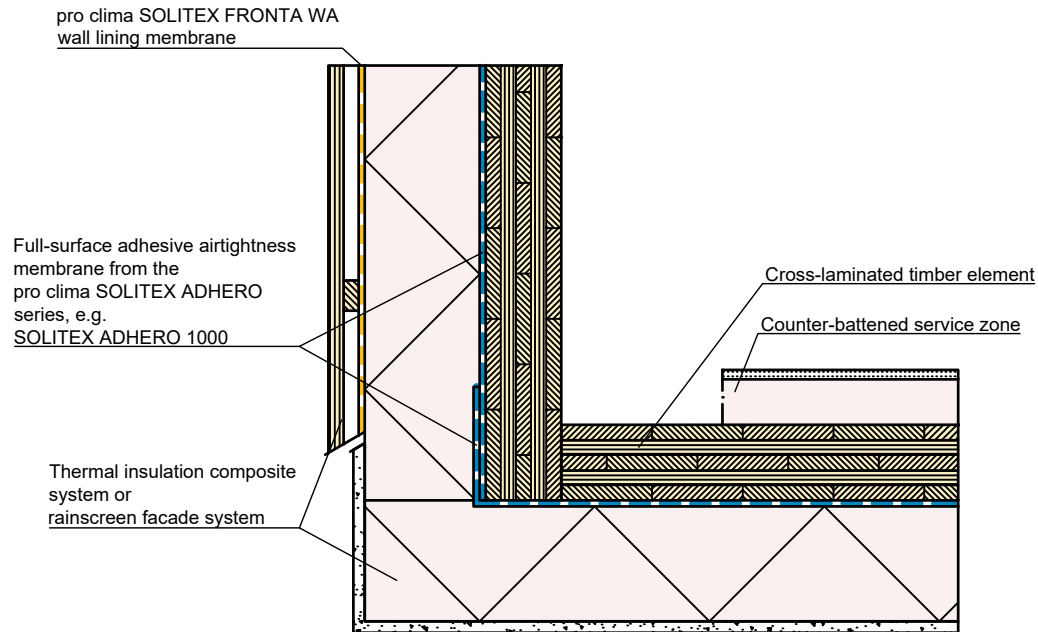
Solid timber construction | Exterior corner | Exterior taping with TESCON PROTECT

Airtight sealing on the inside with pro clima TESCON PROTECT. The cross-laminated timber elements must be manufactured to be airtight.

Typical structural situation to illustrate the airtightness and windtightness layers. When carrying out planning and performing installation on site, please observe the currently applicable technical regulations and the relevant pro clima recommendations for applications and installation. (German version: 09/21; international version 03/23).

pro clima ... and the insulation is perfect





Solid timber construction | Exterior corner | Airtightness with SOLITEX ADHERO

Airtightness with pro clima SOLITEX ADHERO – for example: in the case of installation during the construction phase.

pro clima ... and the insulation is perfect

