

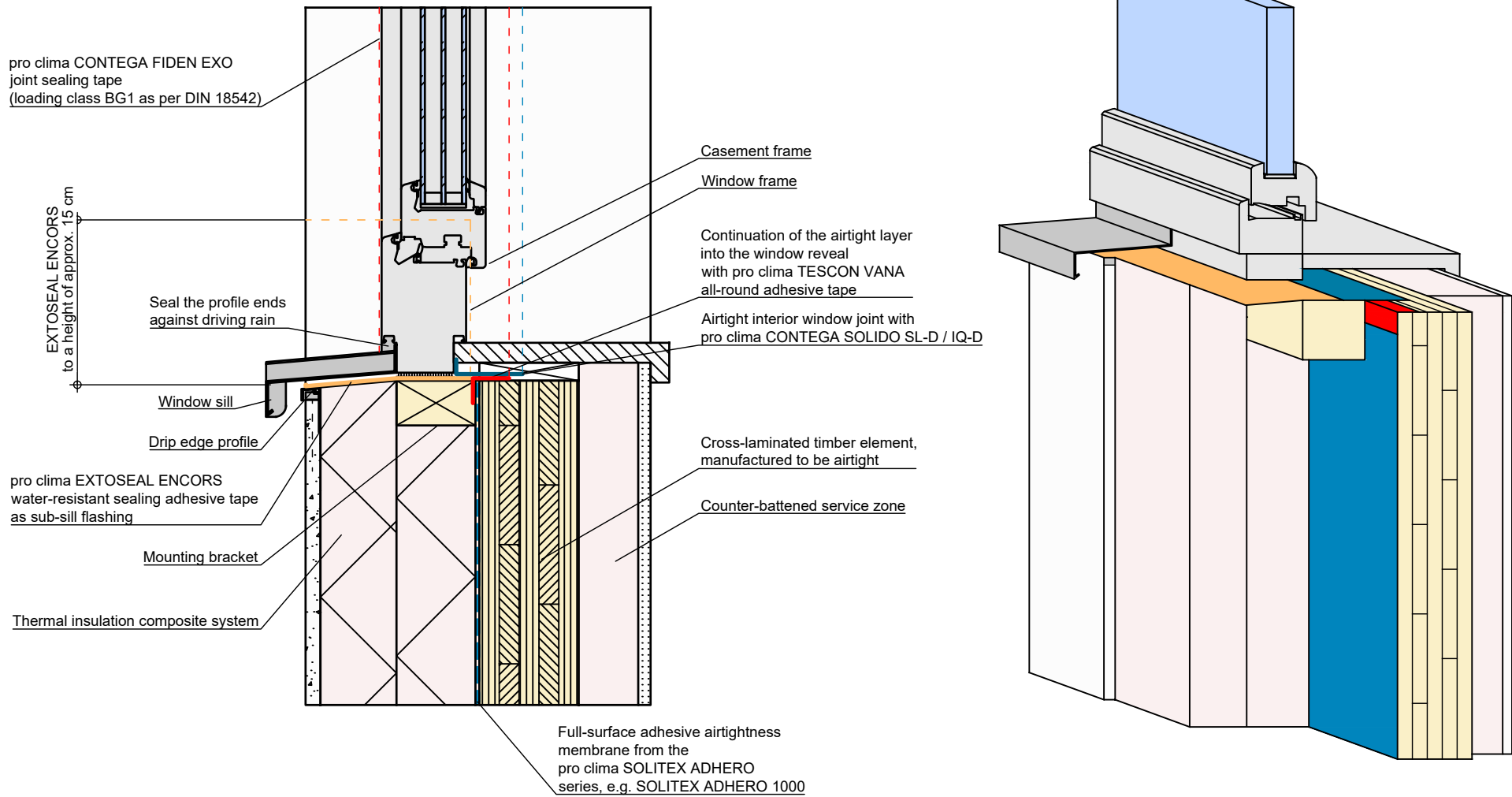
Solid timber construction | Window | Joint at bottom | Var. 1

Variant 1: Airtight window joint with CONTEGA SOLIDO SL-D / IQ-D. The cross-laminated timber elements must be manufactured to be airtight.

pro clima ... and the insulation is perfect



Typical structural situation to illustrate the airtightness and windtightness layers. When carrying out planning and performing installation on site, please observe the currently applicable technical regulations and the relevant pro clima recommendations for applications and installation. (German version: 09/21; international version 03/23).

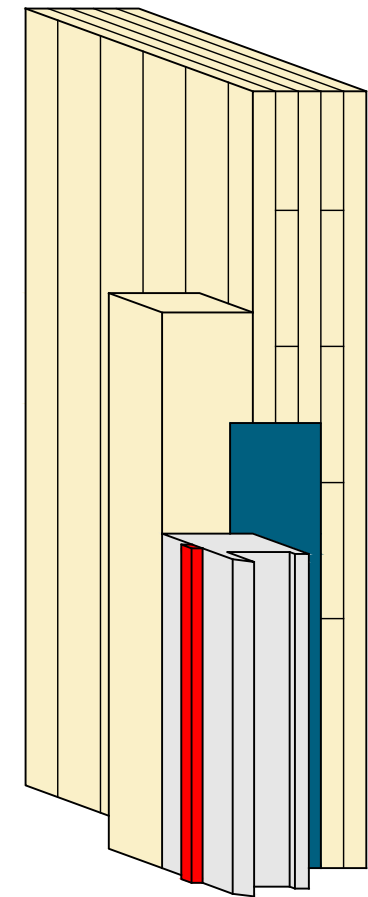
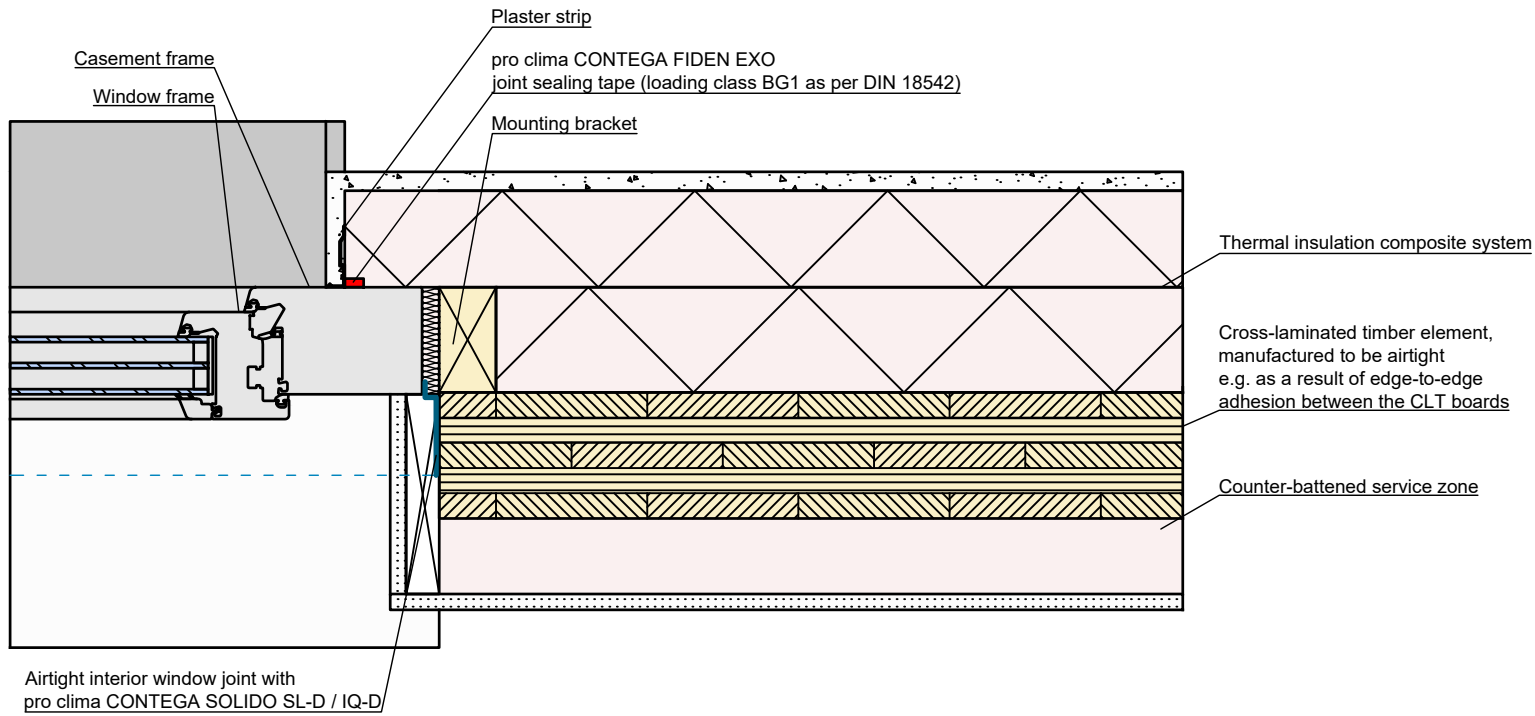


Solid timber construction | Window | Joint at bottom | Var. 2

Variante 2: Airtight sealing of the building component with pro clima SOLITEX ADHERO. Window joint with CONTEGA SOLIDO SL-D / IQ-D and TESCON VANA. *pro clima ... and the insulation is perfect*

Typical structural situation to illustrate the airtightness and windtightness layers. When carrying out planning and performing installation on site, please observe the currently applicable technical regulations and the relevant pro clima recommendations for applications and installation. (German version: 09/21; international version 03/23).



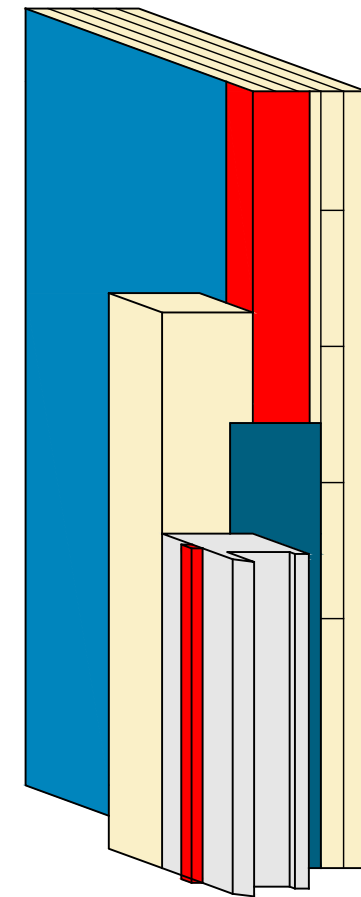
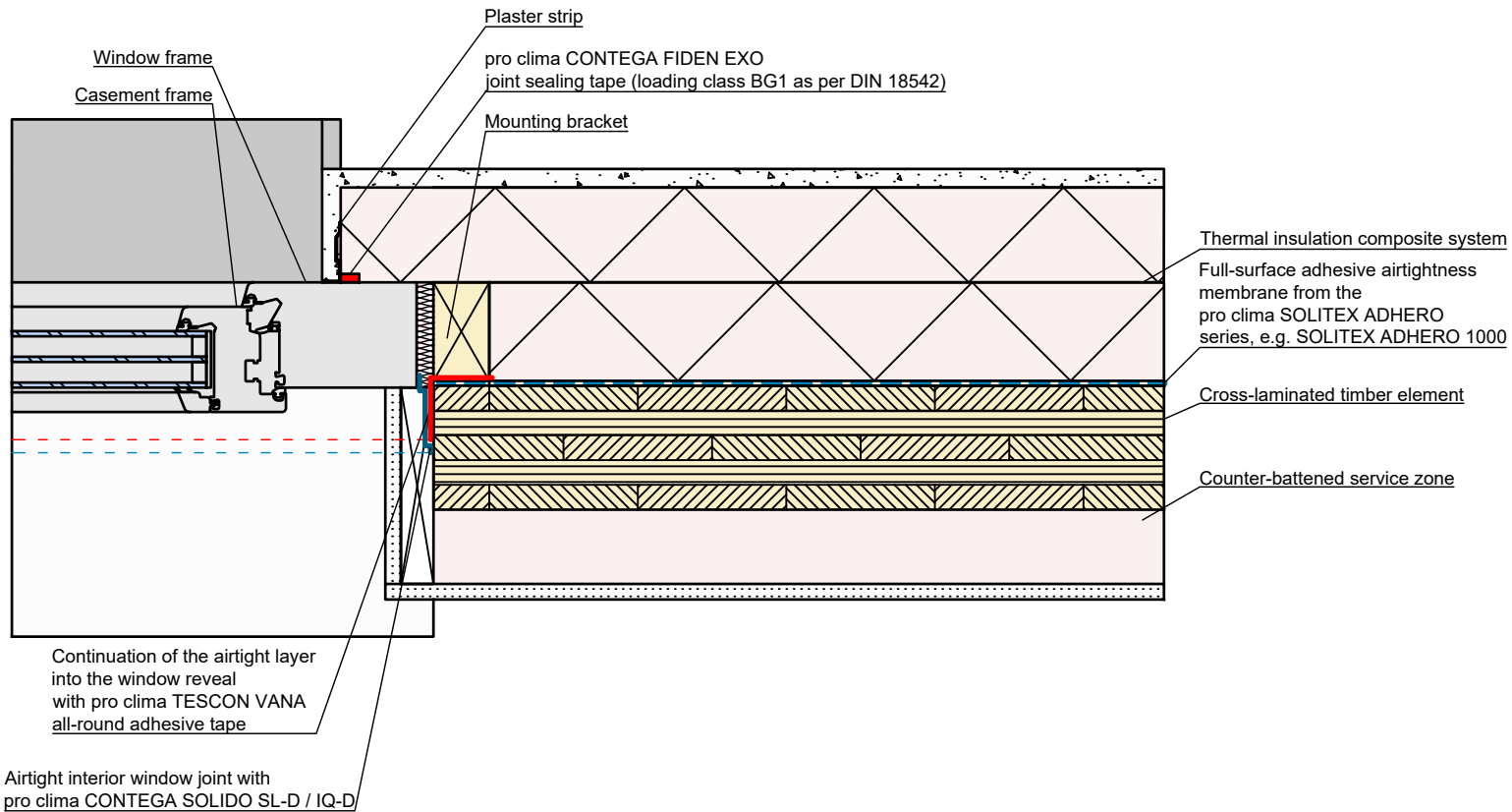


Solid timber construction | Window | Joints at side and top | Var. 1

Variant 1: Airtight window joint with CONTEGA SOLIDO SL-D / IQ-D. The cross-laminated timber elements must be manufactured to be airtight.

pro clima ... and the insulation is perfect

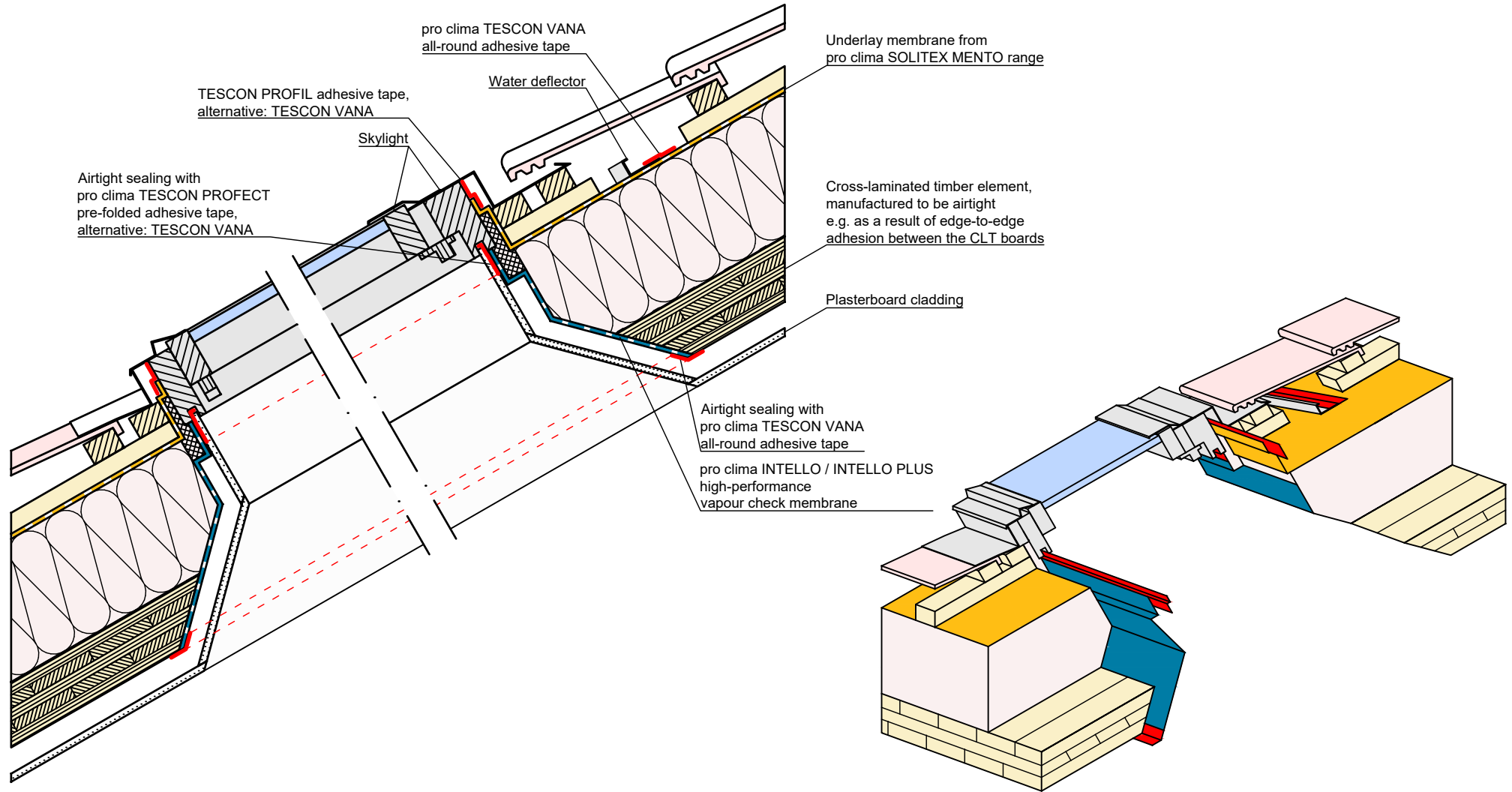




Solid timber construction | Window | Joints at side and top | Var. 2

Variant 2: Airtight sealing of the building component with pro clima SOLITEX ADHERO. Window joint with CONTEGA SOLIDO SL-D / IQ-D and TESCON VANA. *pro clima ... and the insulation is perfect*

Typical structural situation to illustrate the airtightness and windtightness layers. When carrying out planning and performing installation on site, please observe the currently applicable technical regulations and the relevant pro clima recommendations for applications and installation. (German version: 09/21; international version 03/23).



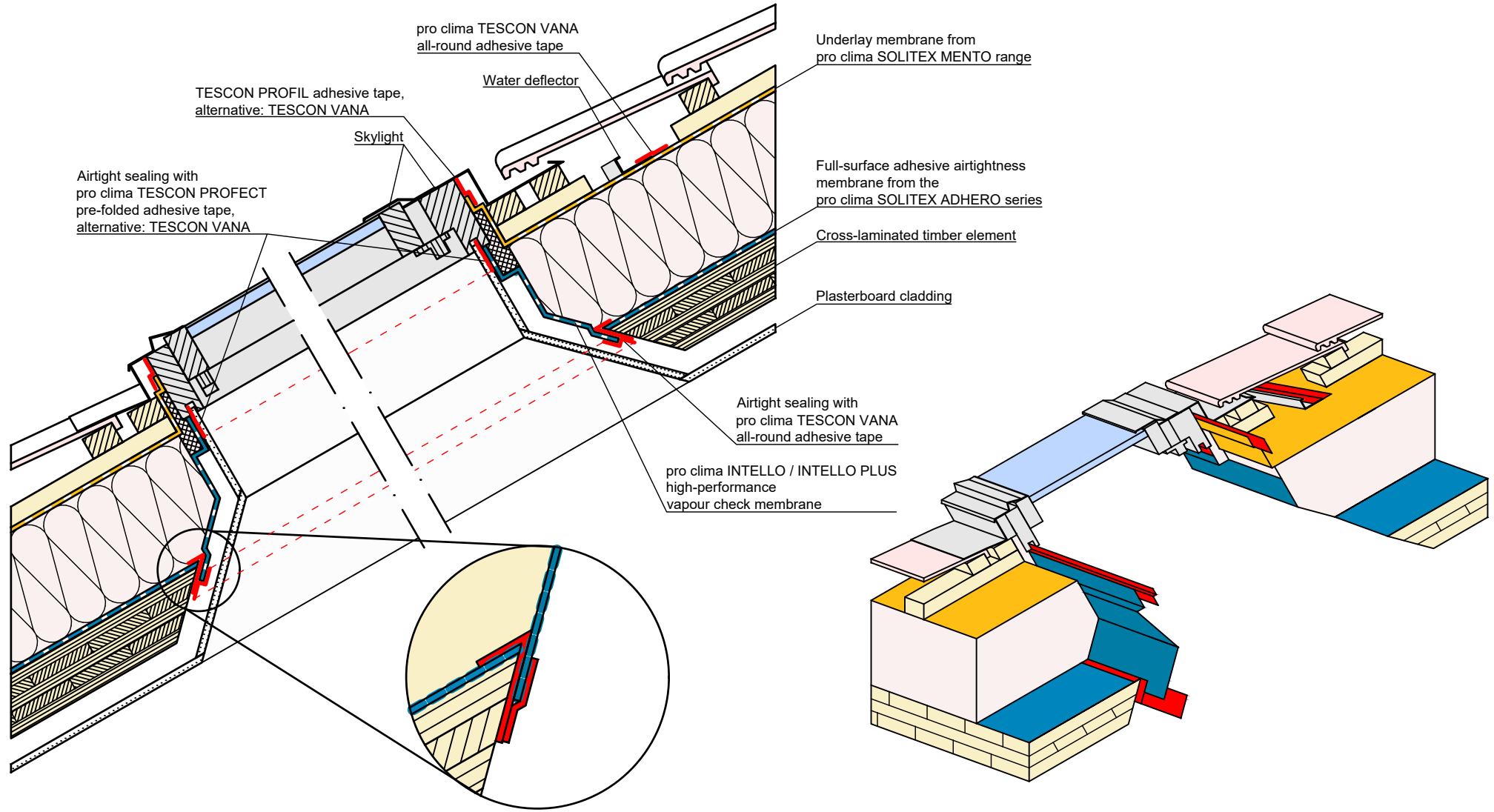
Solid timber construction | Window joint | Skylight | Var. 1

Variant 1: Airtight window joint with TESCON PROFECT / VANA and INTELLO. The cross-laminated timber elements must be manufactured to be airtight.

pro clima ... and the insulation is perfect



Typical structural situation to illustrate the airtightness and windtightness layers. When carrying out planning and performing installation on site, please observe the currently applicable technical regulations and the relevant pro clima recommendations for applications and installation. (German version: 09/21; international version 03/23).



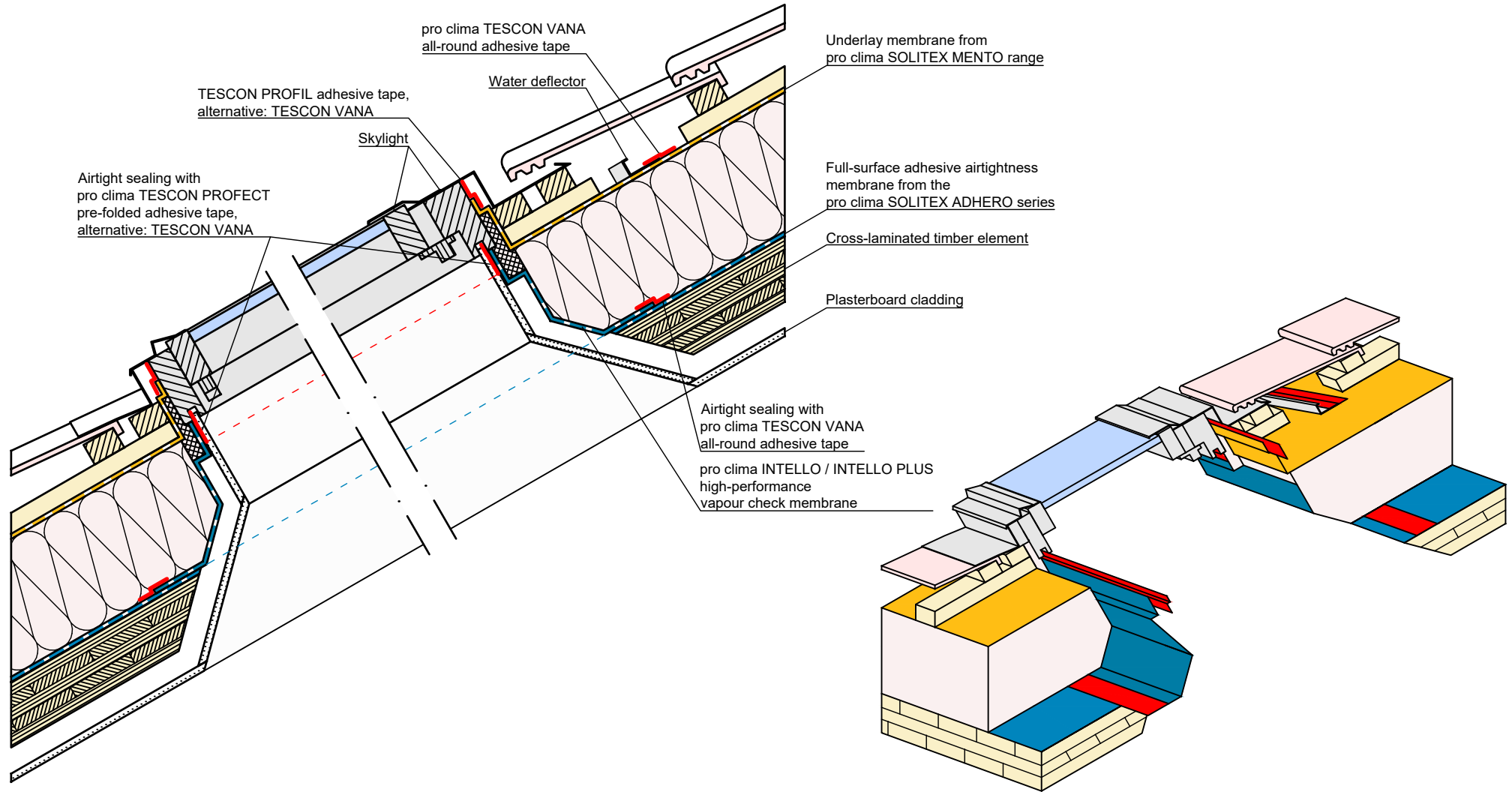
Solid timber construction | Window joint | Skylight | Var. 2

Variant 2: Airtight sealing of the building component with pro clima SOLITEX ADHERO. Airtight window joint with TESCON PROTECT and TESCON VANA.

pro clima ... and the insulation is perfect



Typical structural situation to illustrate the airtightness and windtightness layers. When carrying out planning and performing installation on site, please observe the currently applicable technical regulations and the relevant pro clima recommendations for applications and installation. (German version: 09/21; international version 03/23).



Solid timber construction | Window joint | Skylight | Var. 2a

Variant 2: Airtight sealing of the building component with pro clima SOLITEX ADHERO. Airtight window joint with TESCON PROFECT and TESCON VANA.

pro clima ... and the insulation is perfect



Typical structural situation to illustrate the airtightness and windtightness layers. When carrying out planning and performing installation on site, please observe the currently applicable technical regulations and the relevant pro clima recommendations for applications and installation. (German version: 09/21; international version 03/23).